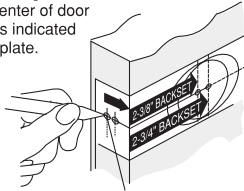


# LEVER INSTALLATION INSTRUCTIONS

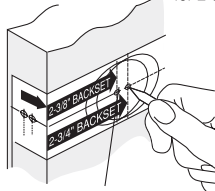
## 1. MARK DOOR

**A.** Measure up approximately 36" from the door bottom. Fold and apply template to the door edge as shown. Mark center of door edge as indicated on template.



MARK FOR 31/32" OR 1" HOLE IN DOOR EDGE

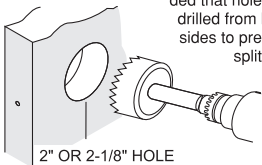
**B.** Mark center hole on door face through guide on template for 2-3/8"(60mm) or 2-3/4"(70mm) backset.



MARK FOR 2" OR 2-1/8" HOLE IN DOOR FACE

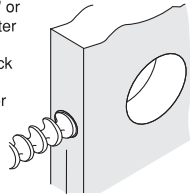
## 2. DRILL HOLES

**A.** Drill 2" or 2-1/8" hole through door face as marked for lockset. It is recommended that holes be drilled from both sides to prevent splitting.



2" OR 2-1/8" HOLE

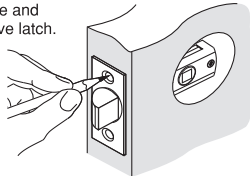
**B.** Drill 31/32" or 1" hole in center of door edge for latch. Check template for correct size for your latch application.



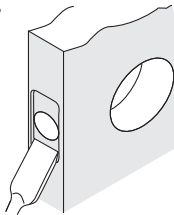
31/32" OR 1" HOLE

## 3. INSTALL LATCH

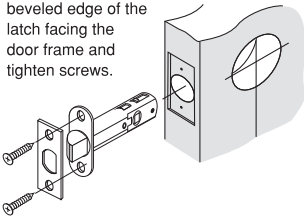
**A.** Insert latch in hole keeping it parallel to face of door. Mark outline and remove latch.



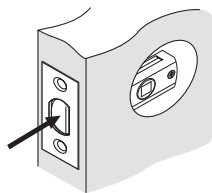
**B.** Chisel 1/8" deep or until latch face is flush with door edge.



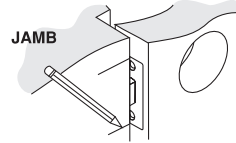
**C.** Insert latch with the beveled edge of the latch facing the door frame and tighten screws.



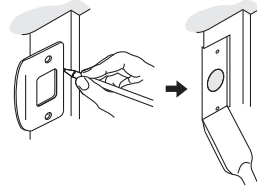
**D.** Installed latch.



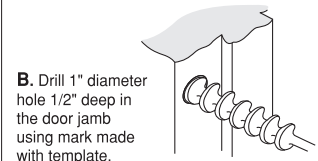
## 4. INSTALL STRIKE



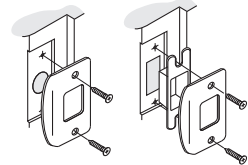
**A.** Place the template over the latch face-plate as shown. Keeping the template in place close the door. Mark the top and bottom edge of the template on the front side of the door jamb. Use the template to mark center point for latch hole.



**C.** Position strike plate with the inside edge 1/4" away from the door stop as shown. Outline the edge of the strike with a sharp pencil. Remove strike and use a sharp chisel to make a 1/16" deep mortise cut as shown.

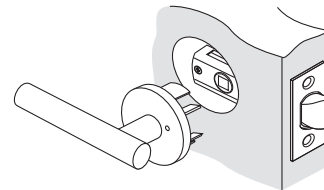


**B.** Drill 1" diameter hole 1/2" deep in the door jamb using mark made with template. Make sure the hole is not less than 1/2" deep otherwise the latch will not fully extend in the hole.



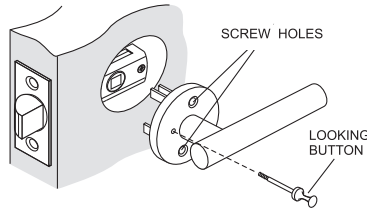
**D.** Install strike and tighten screws as shown. For ease of installation you can pre-drill screw holes using as small bit and drilling in the center of the screw holes on the strike. To prevent the door from rattling when it is closed you can bend the small strike tongue into up to 45 degrees into the strike hole using pliers before installing the strike. A plastic strike box is supplied for installation in pre-cut metal door frames.

## 5. INSTALL EXTERIOR MECHANISM



Position the outside lever, inserting the square spindle into the square hole in the latch. Make sure that the screw posts are lined up and inserted into their receiving holes in the latch. Hold the lever flush against the door.

## 6. INSTALL INTERIOR MECHANISM



Install the interior lever inserting the square spindle in the square hole in the latch. Align the rosette screw holes with the interior screw posts. Hold flush against the door, insert and tighten screws. For privacy function levers insert the locking button in the hole as shown, hand-turn until tight.

Suitable for door thickness:  
1-3/8"(35mm) to 1-3/4"(45mm)

